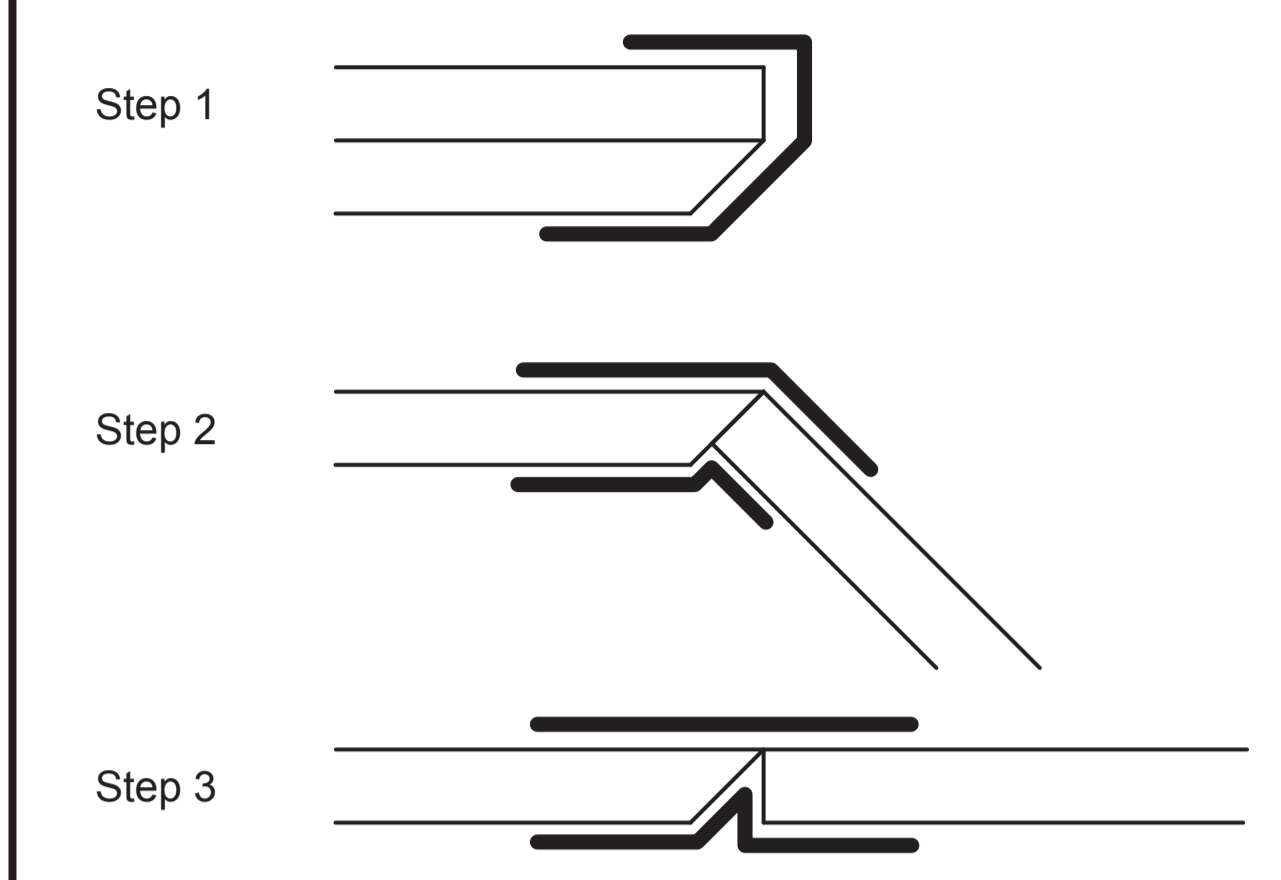


Motor mounting

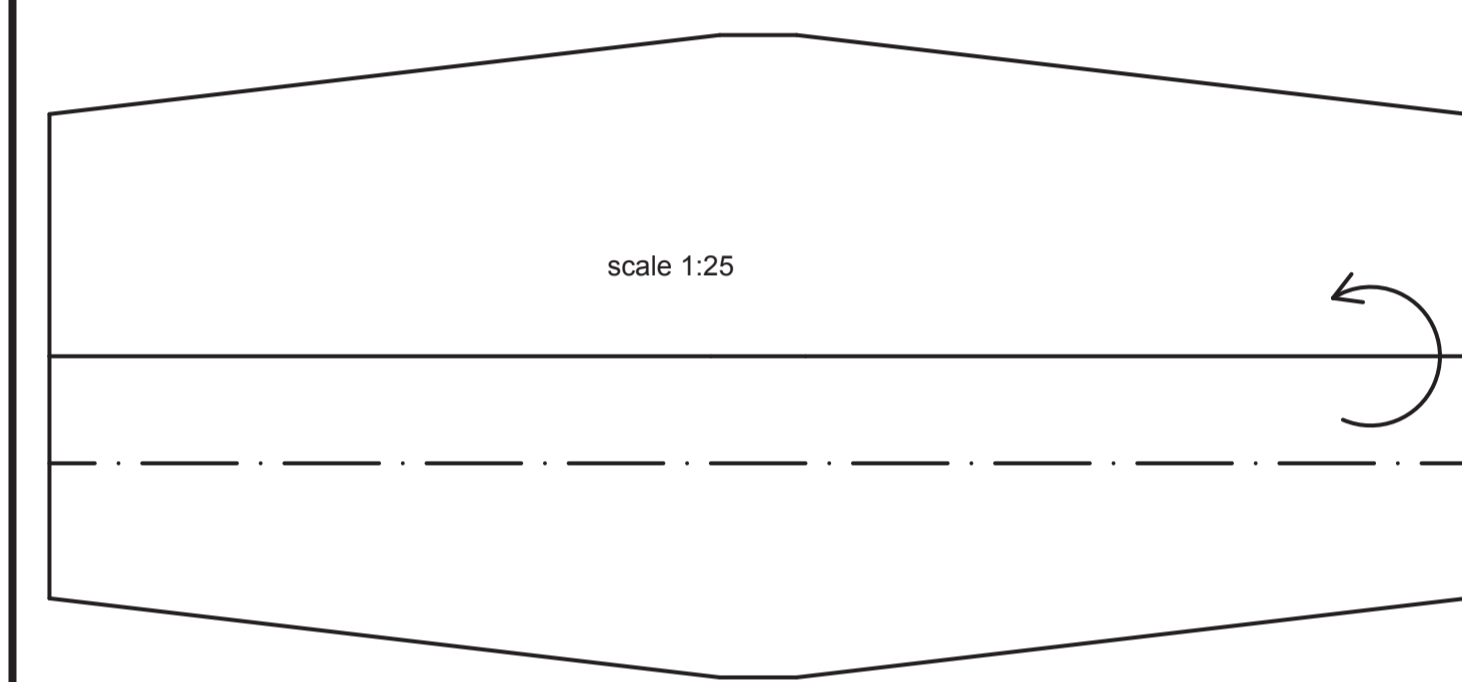
When using a brushless motor be sure to glue the plywood bracket firmly. The thrust can be enormous (600-800 grams) and can pull out the bracket if not firmly attach.

Rudder attachment



You can use clear packing tape for connecting the rudders. Use these steps for a strong attachment.

Wing example



Cut the wing in one piece and tape the outside leading edge with clear packing tape and push with a ruler in the inside leading edge a sharp line before bending the wing into profile. After glueing remove the tape.

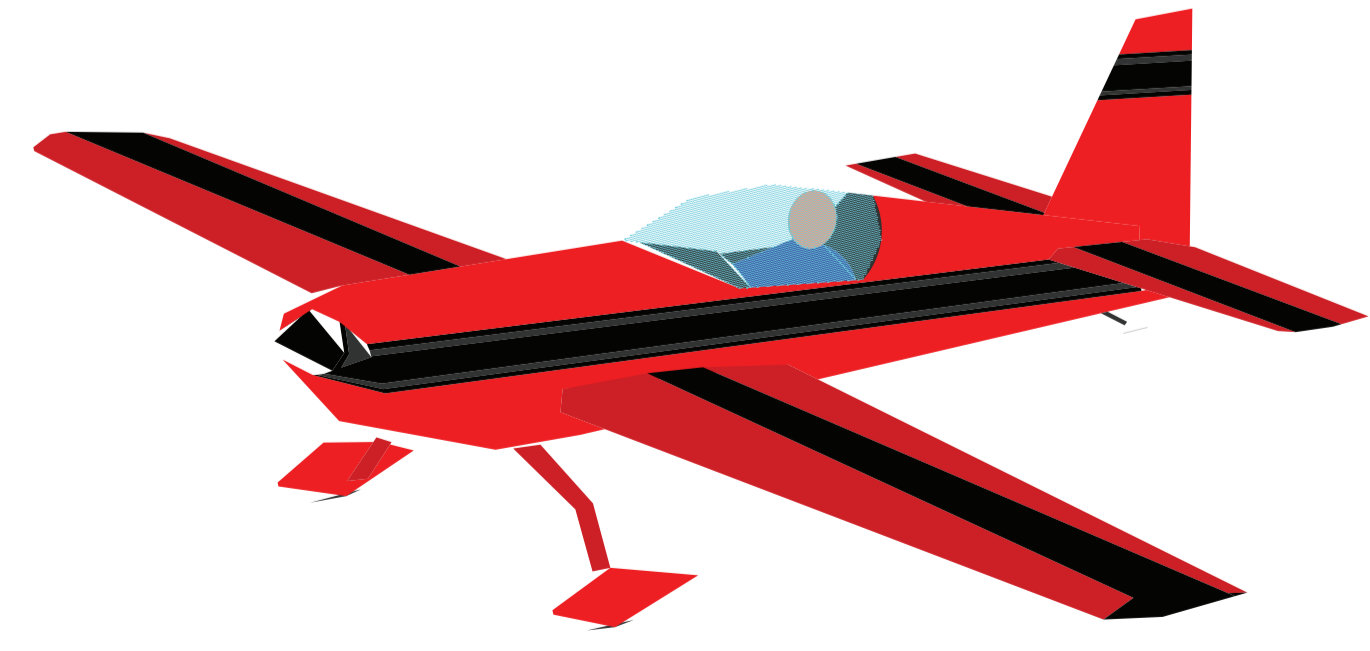
Building tips

After cutting the pieces out of Depron, you can use a Steadler or Edding waterproof pen for a collierfull deceration

Before bending the round curves first tape the outside with clear packing tape. Bend the piece over a round object such as a table edge. After glueing and drying remove the tape for weight reduction. To fold the leading edge from the wing tape the outside and push a ruler edge in the inside leading edge from the wing. After bending and glueing remove the tape.

For 3D flying is a Brushless motor and LIPO battery the best choice.

Let me now how your airplane performs on:
 Visit me on www.geocities.com/rc_pittsspecial
 Have lots of fun with this little Depron Airplane!



OvdP Productions <small>Date: 30 june 2004 Scale 1:1 Version V2.0</small>	Designer: Olaf van der Plaats Scale 1:1 Version V2.0	Wingspan:	750 mm
		Length:	660 mm
Raven Sem		Wingarea:	12 dm ²
		Max. weight:	300 g
		Wingload:	25 g/dm ²