

Vapor motor shown

Peter Rake's
Bostonian
 Copyright P. Rake 2016

N
 laminate 2 off
 1/20 balsa

M 1/32 ply

F2A 1/20 balsa
 groove around u/c wire

RP 1/20 balsa

F4 1/20 balsa

FS 1/20 balsa

thrust
 angle

crack in
 & glue well

F1 1/20 balsa

T1 1/20 balsa

T2 1/20 balsa

1/20 balsa
 between sides

1/20 balsa
 between sides

pushrod

unless noted
 fuselage frame
 is 1/20 sq. balsa

1/32 balsa
 exit plate

1/32 balsa
 exit plate

horn 1/64 ply

BALANCE

WS

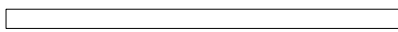
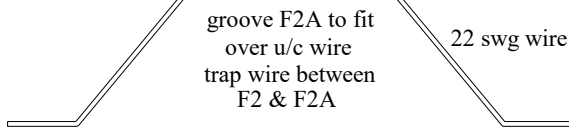
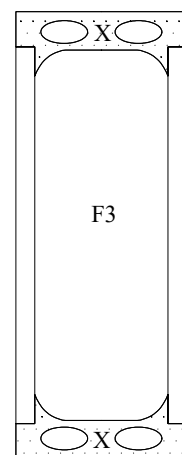
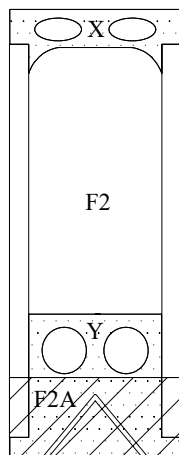
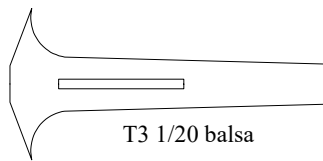
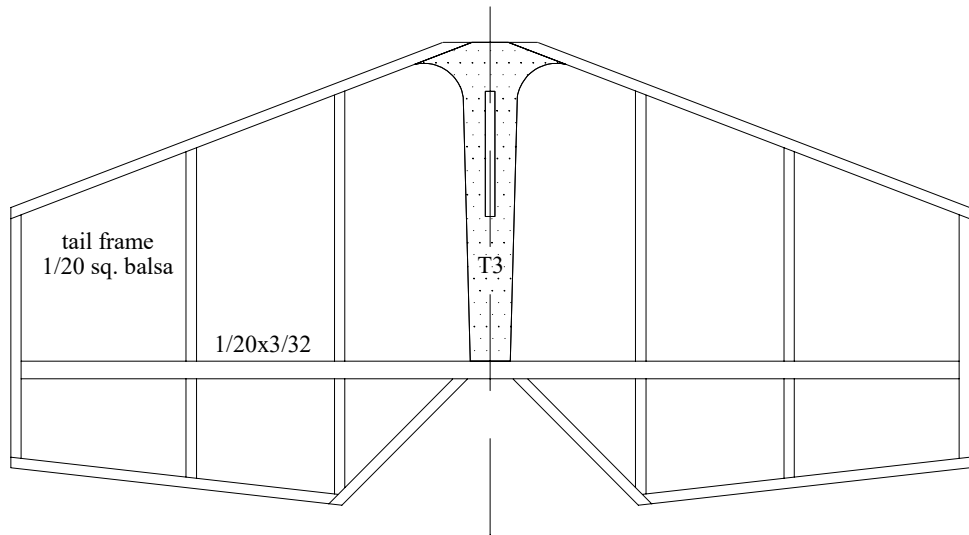
tail frame
 1/20 sq. balsa

1/20x3/32

1/20x1/8

horn

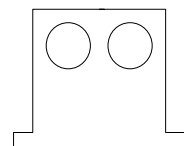
c.f. rod
 tailskid



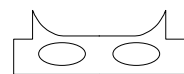
F2 upright 1/20 balsa



F3 upright 1/20 balsa



Y 1/20 balsa

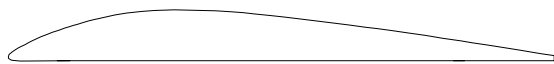


X 1/20 balsa

Peter Rake's
Bostonian

Copyright P. Rake 2016

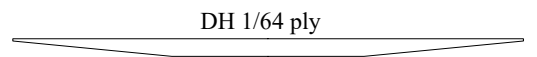
Peter Rake's
Bostonian
 Copyright P. Rake 2016



WT 1/20 balsa



R2 1/20 balsa



DH 1/64 ply



R1 1/20 balsa

